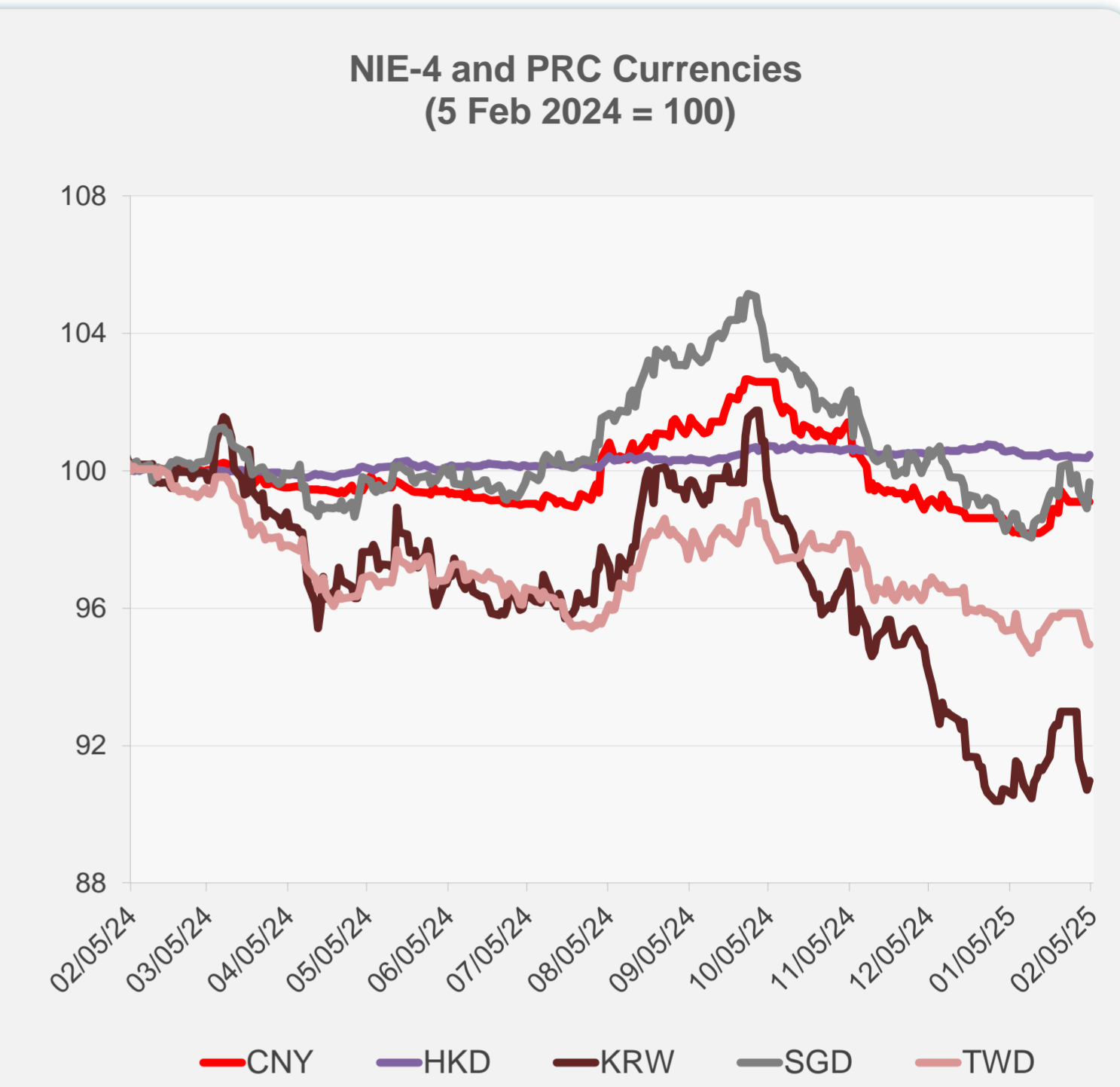
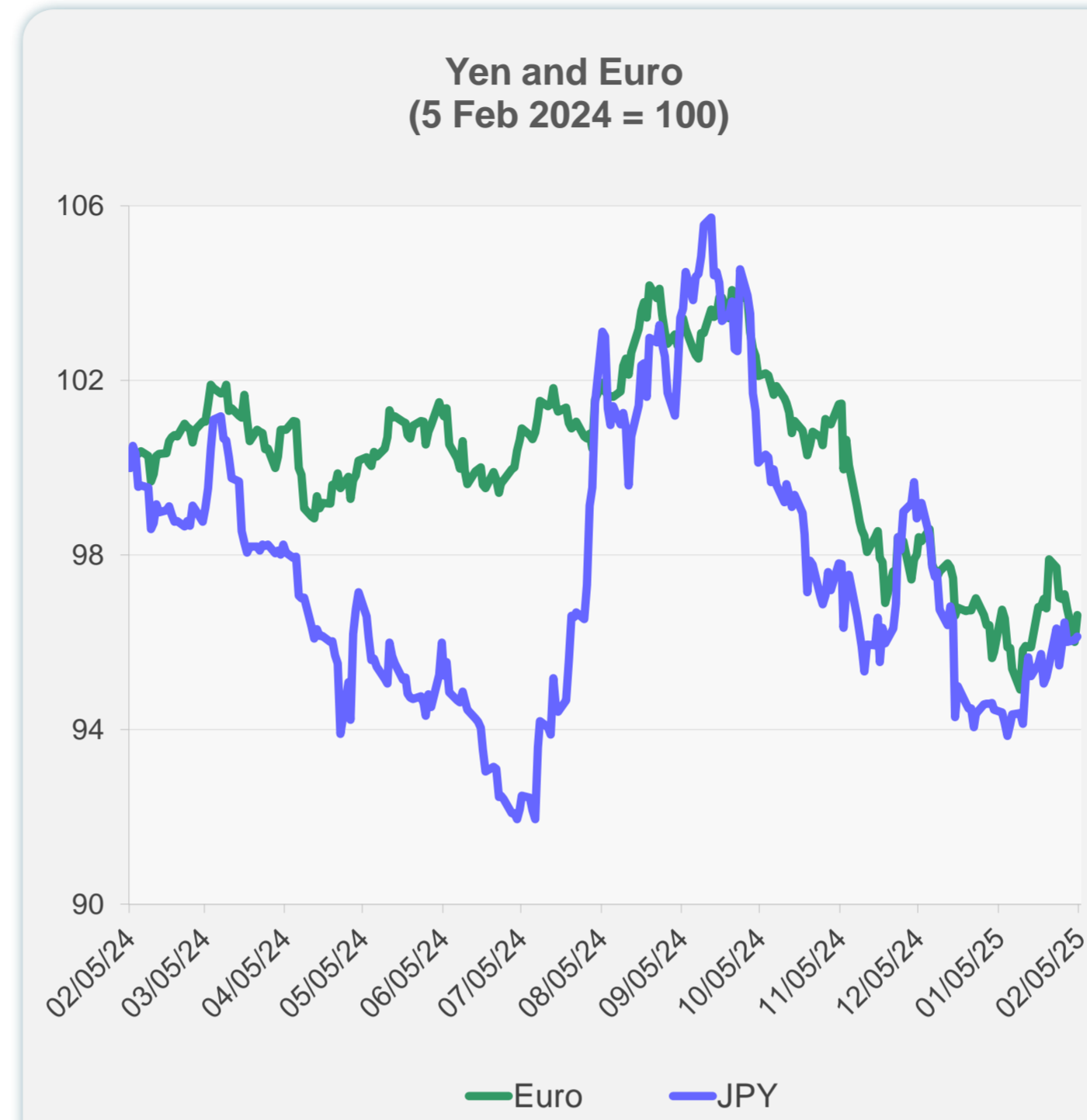
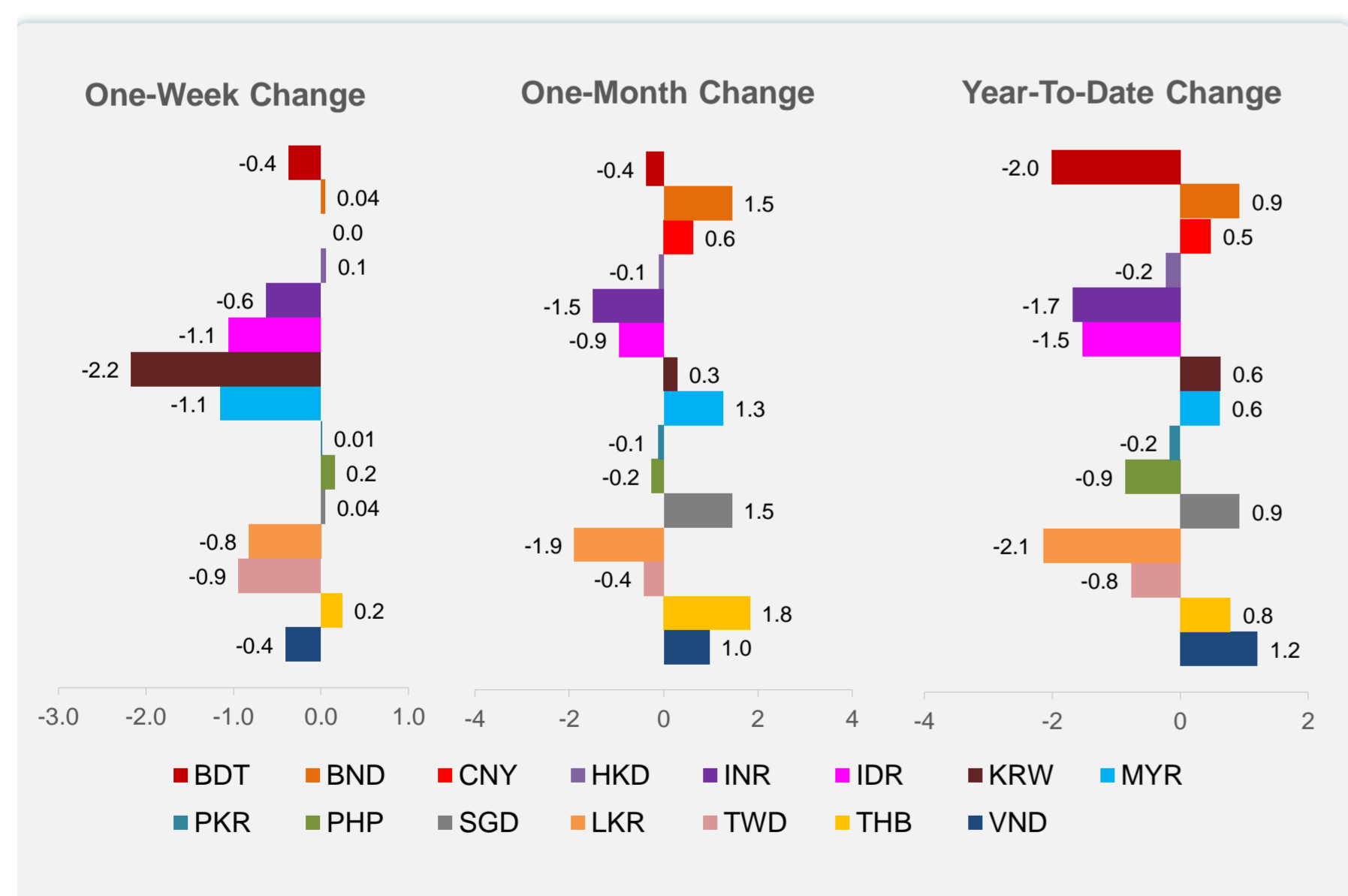
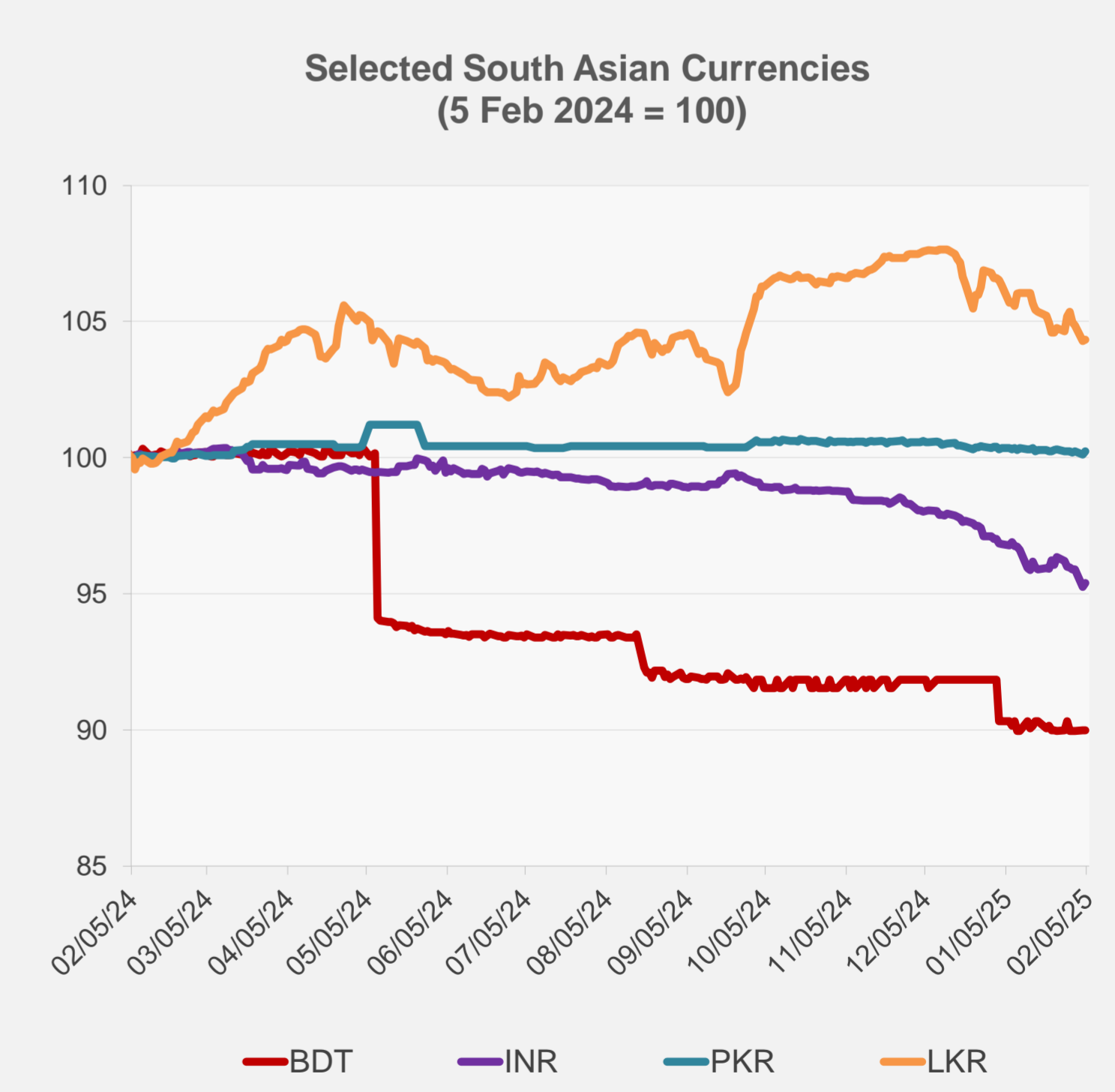
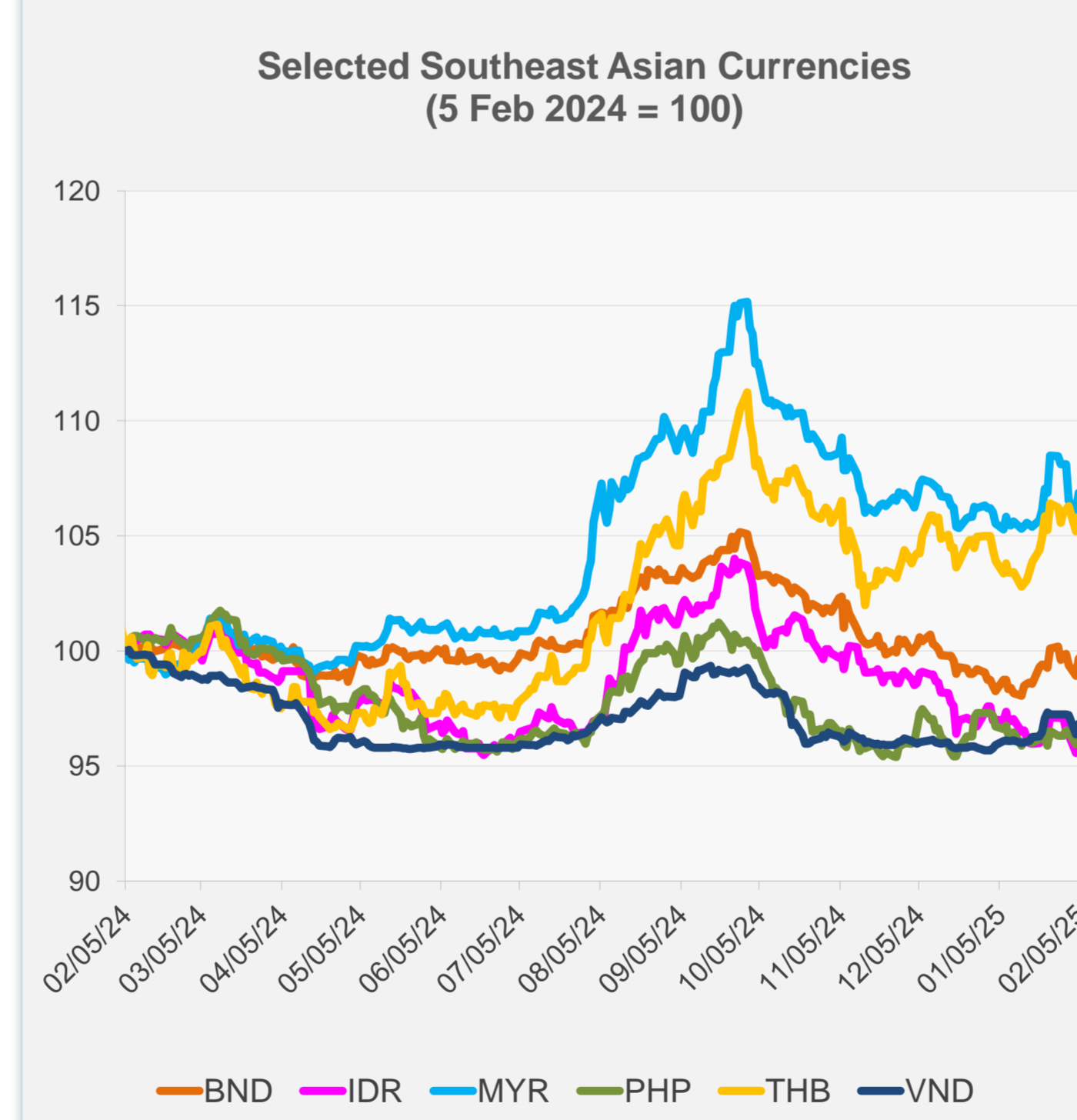


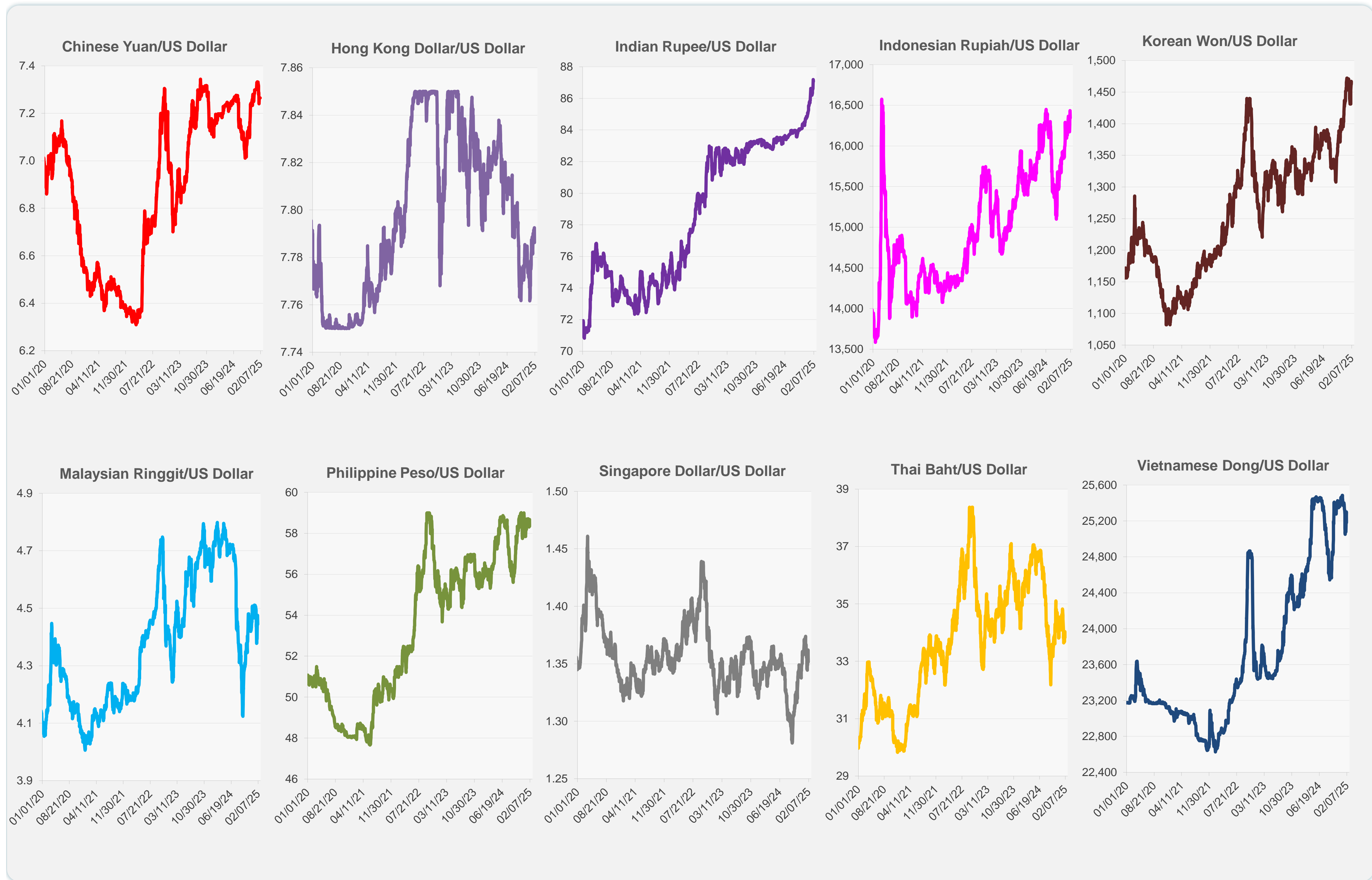
	Latest Closing	% change from Previous Day	% change from 01-Jan-25
Euro	0.96	0.64	0.25
Japanese yen (JPY)	154.65	0.09	1.63
Bangladeshi taka (BDT)	121.95	0.00	-2.01
Brunei dollar (BND)	1.35	0.77	0.93
Chinese yuan (CNY)	7.26	0.00	0.48
Hong Kong dollar (HKD)	7.79	0.08	-0.23
Indian rupee (INR)	87.08	0.13	-1.68
Indonesian rupiah (IDR)	16,345.00	0.55	-1.53
Korean won (KRW)	1,462.90	0.28	0.63
Malaysian ringgit (MYR)	4.44	0.70	0.62
Pakistan rupee (PKR)	278.83	0.11	-0.16
Philippine peso (PHP)	58.35	0.56	-0.86
Singapore dollar (SGD)	1.35	0.77	0.93
Sri Lanka rupee (LKR)	299.42	0.05	-2.14
Taipei,China NT dollar (TWD)	33.04	-0.05	-0.77
Thai baht (THB)	33.83	0.60	0.79
Vietnamese dong (VND)	25,180.00	0.48	1.21



NIE = Newly Industrialized Economies



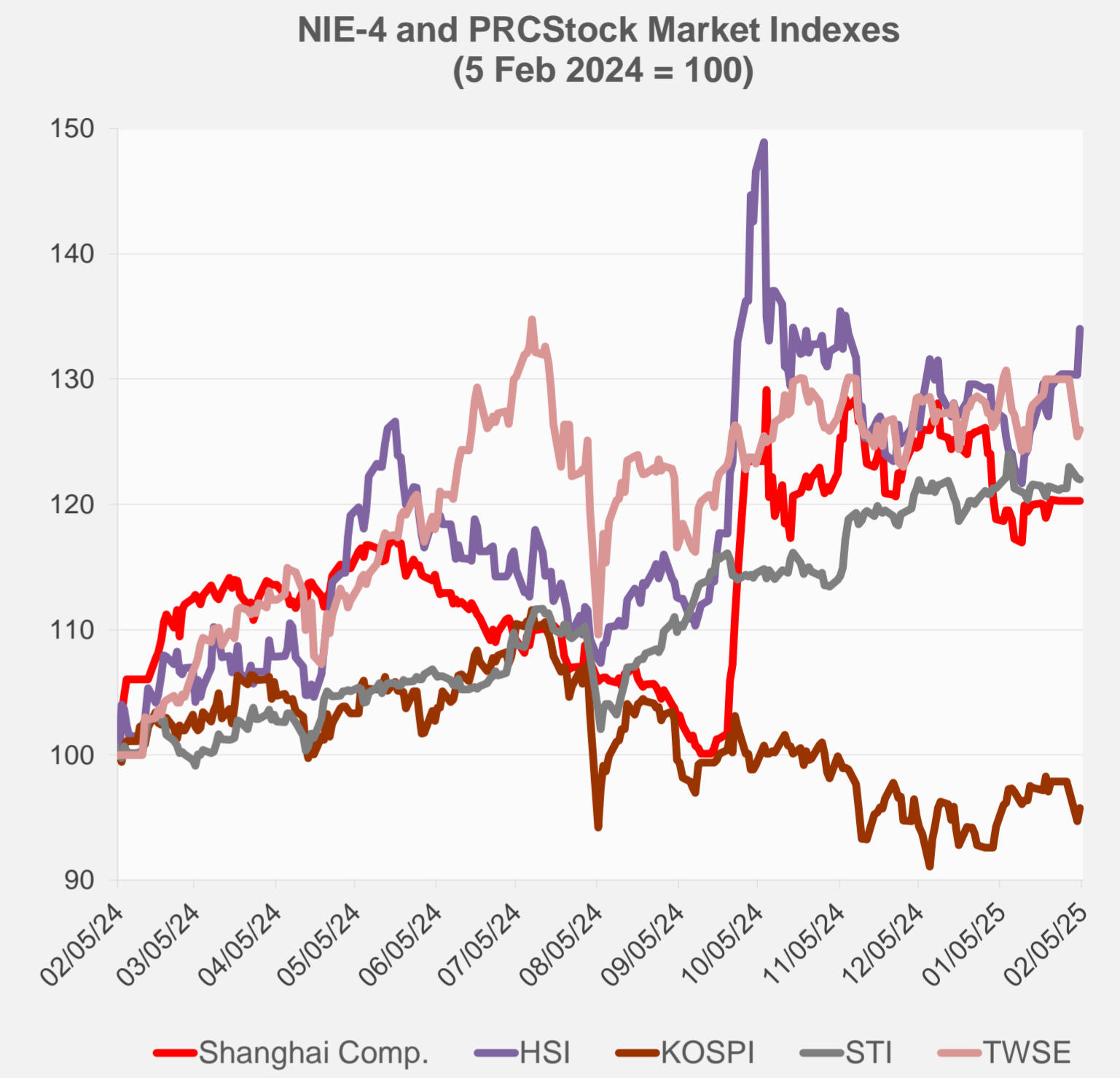
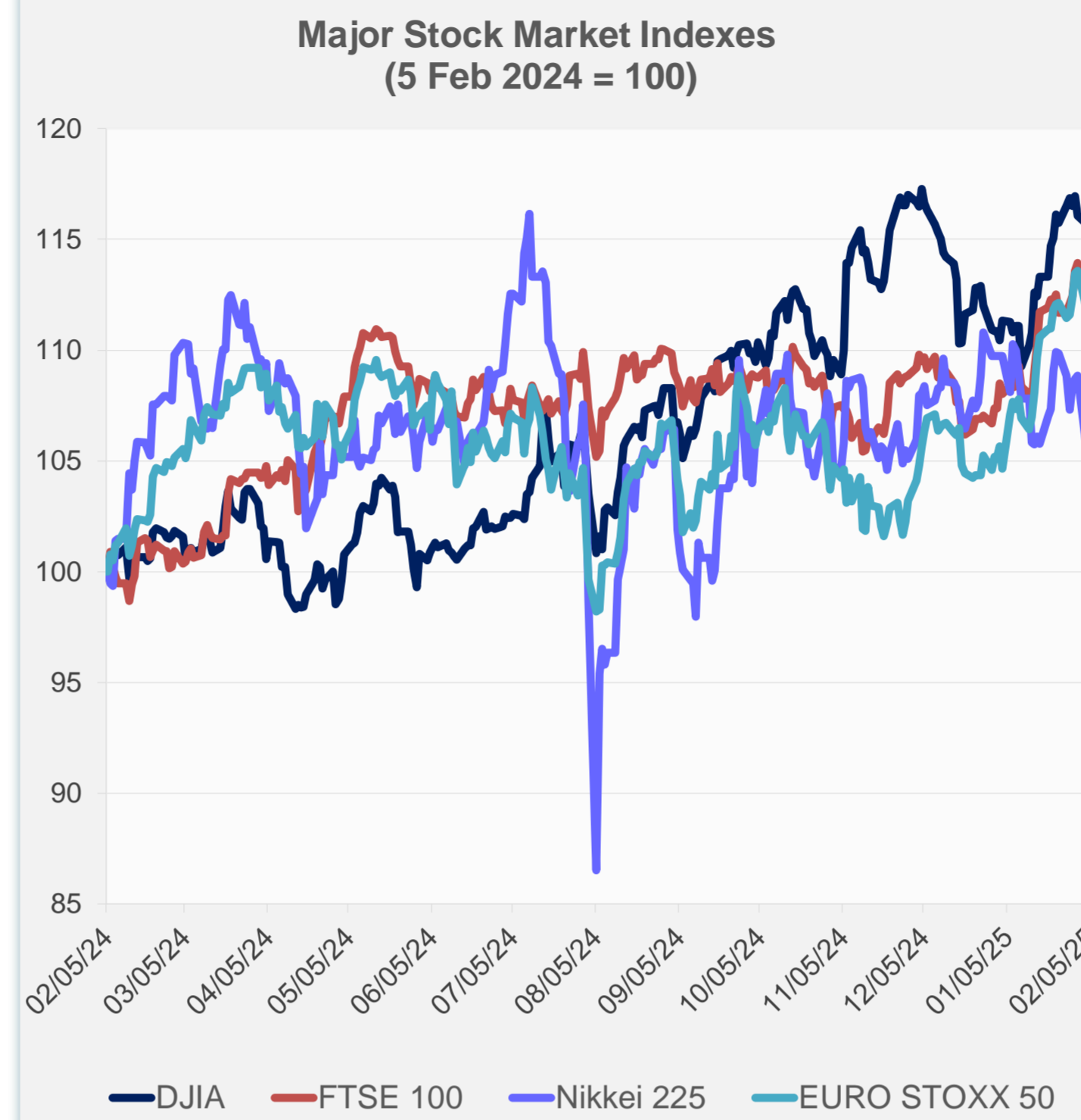
Note: Negative/Decreasing values indicate depreciation of local currency, and positive/increasing values indicate appreciation.
Source: ADB calculations using data from Haver Analytics.



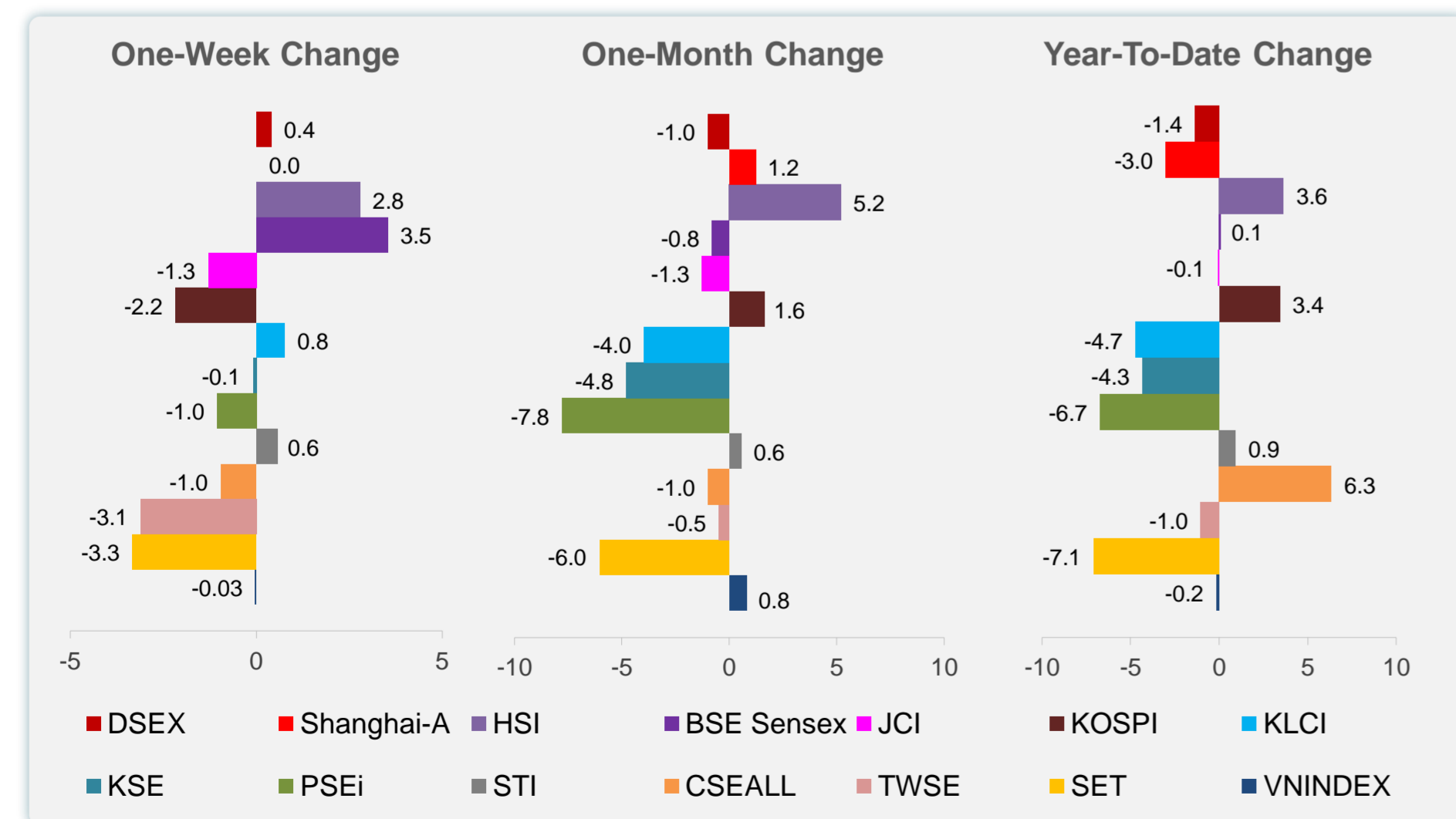
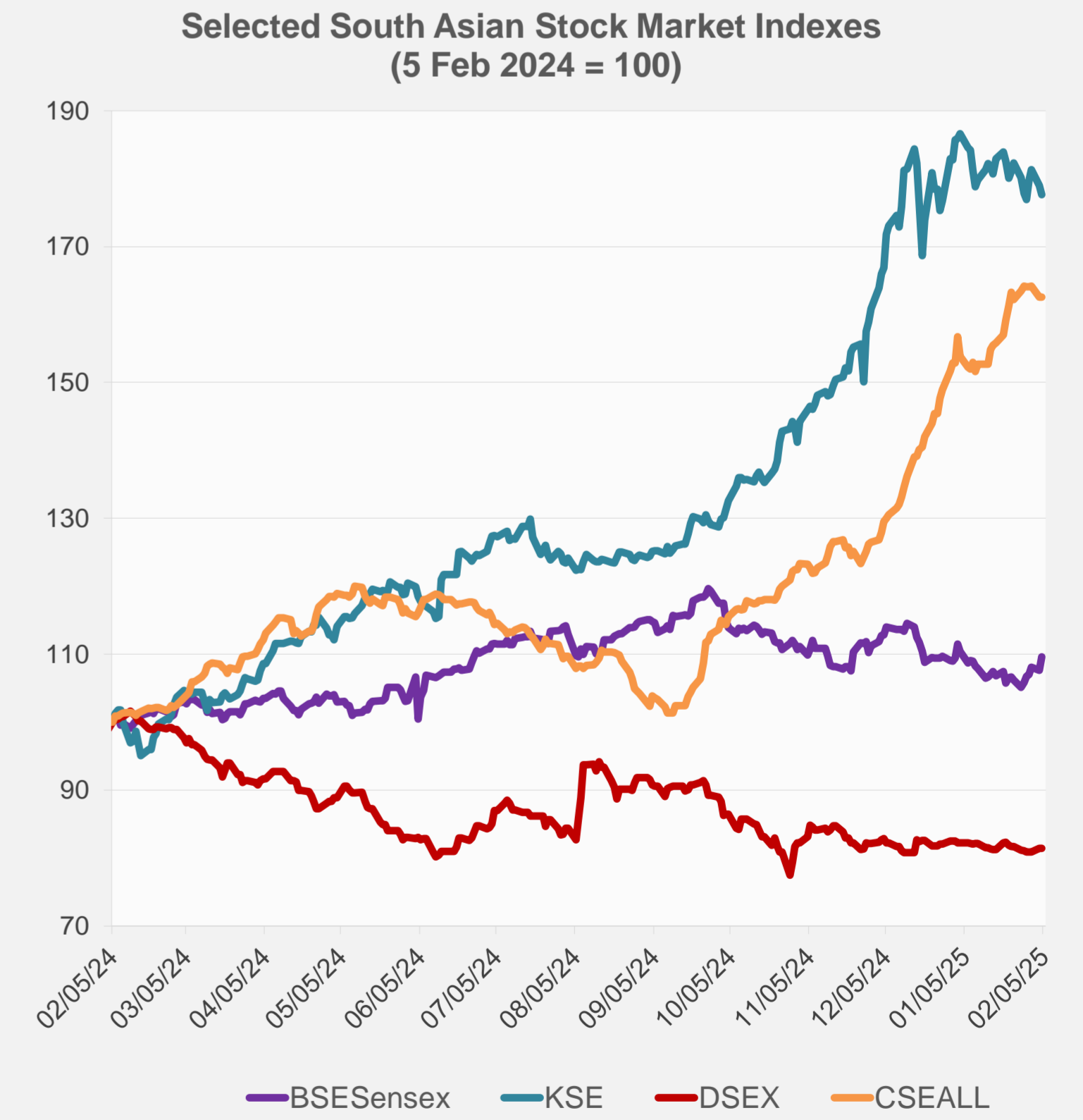
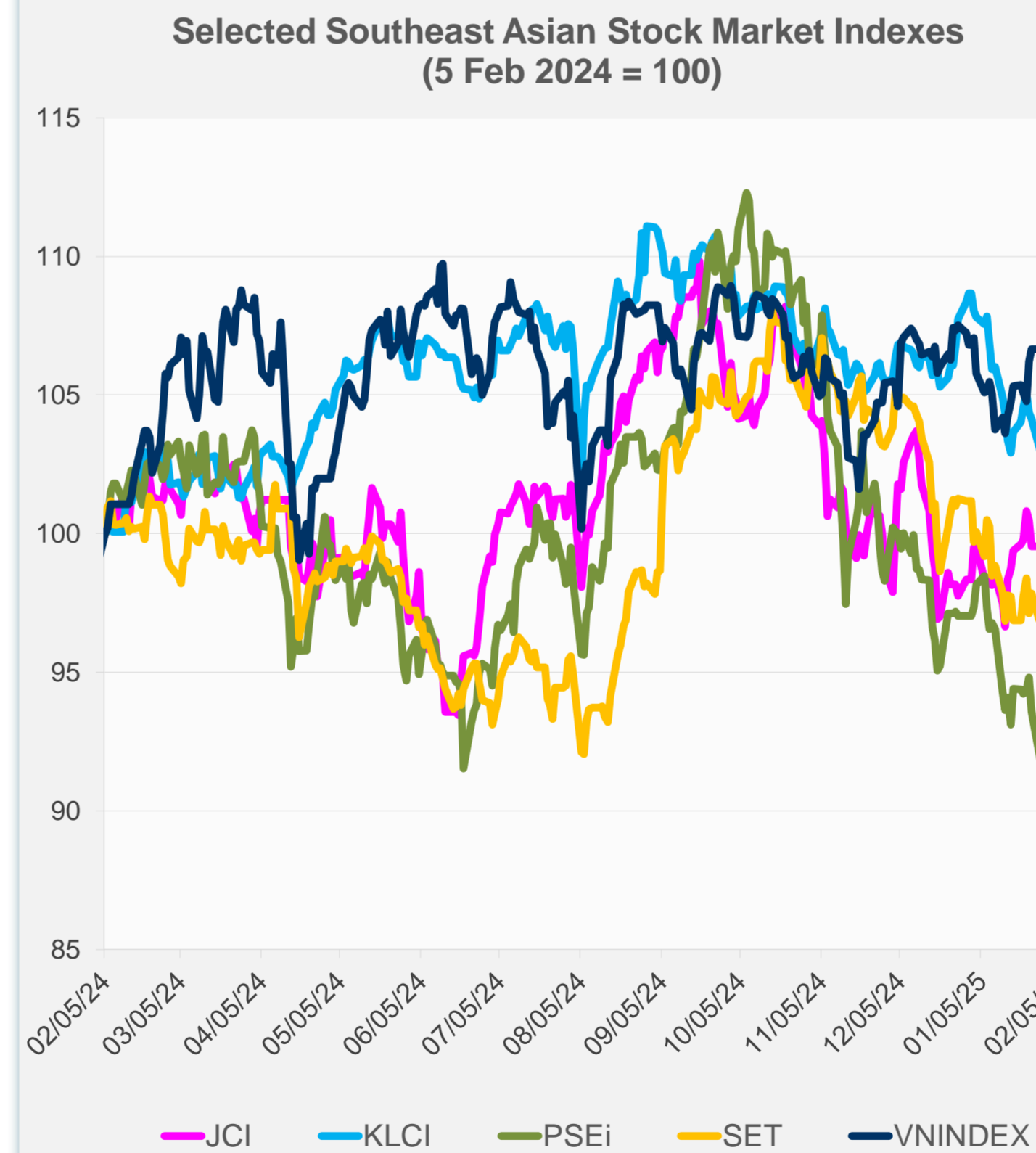
Source: Haver Analytics.

Daily Market Watch
STOCK INDEXES

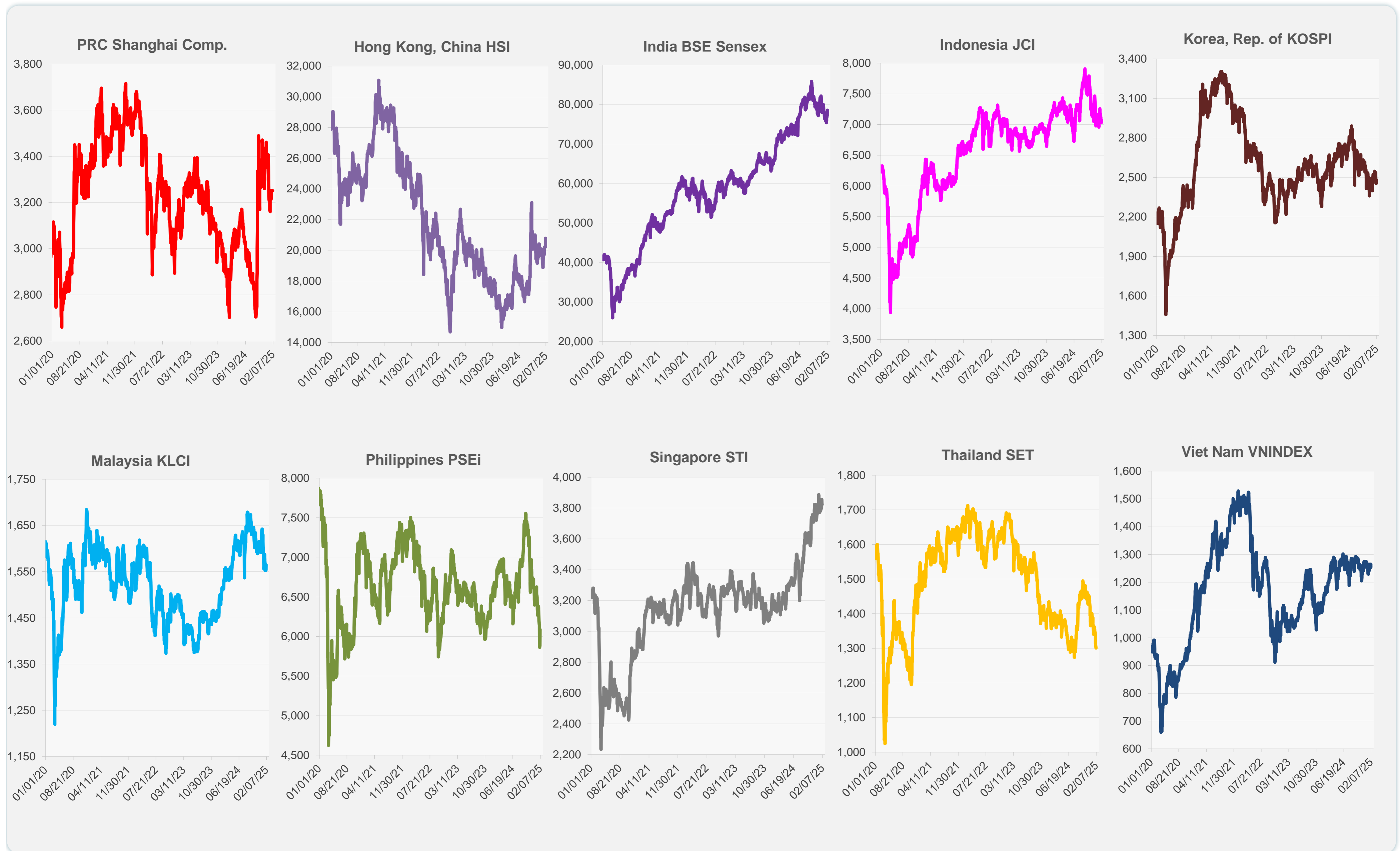
	Latest Closing	% change from Previous Day	% change from 01-Jan-25
US Dow Jones Ind Avg	44,556.04	0.30	4.73
US NASDAQ	19,654.02	1.35	1.78
US S&P 500	6,037.88	0.72	2.66
UK FTSE 100	8,570.77	-0.15	4.87
EURO STOXX 50	5,264.59	0.89	7.53
Japan NIKKEI 225	38,798.37	0.72	-2.75
Bangladesh DSEX	5,147.34	0.03	-1.36
PRC Shanghai Comp.	3,250.60	0.00	-3.02
Hong Kong, China HSI	20,789.96	2.83	3.64
India BSE Sensex	78,583.81	1.81	0.10
Indonesia JCI	7,073.46	0.62	-0.09
Korea, Rep. of KOSPI	2,481.69	1.13	3.43
Malaysia KLCI	1,564.56	0.70	-4.74
Pakistan KSE 100	111,935.38	-0.72	-4.34
Philippines PSEi	6,089.06	3.50	-6.74
Singapore STI	3,823.01	-0.09	0.93
Sri Lanka CSEALL	16,956.49	0.00	6.35
Taipei, China TWSE	22,793.96	0.44	-1.05
Thailand SET	1,301.02	-0.26	-7.08
Viet Nam VNINDEX	1,264.68	0.93	-0.17



NIE = Newly Industrialized Economies



Sources: ADB calculations using data from CEIC Data Company and Haver Analytics.



Sources: CEIC Data Company and Haver Analytics.

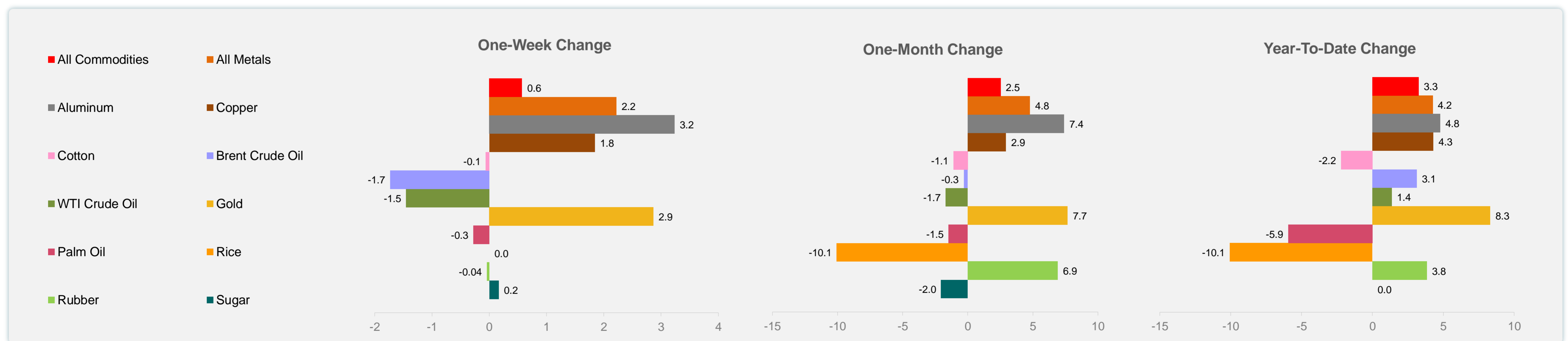
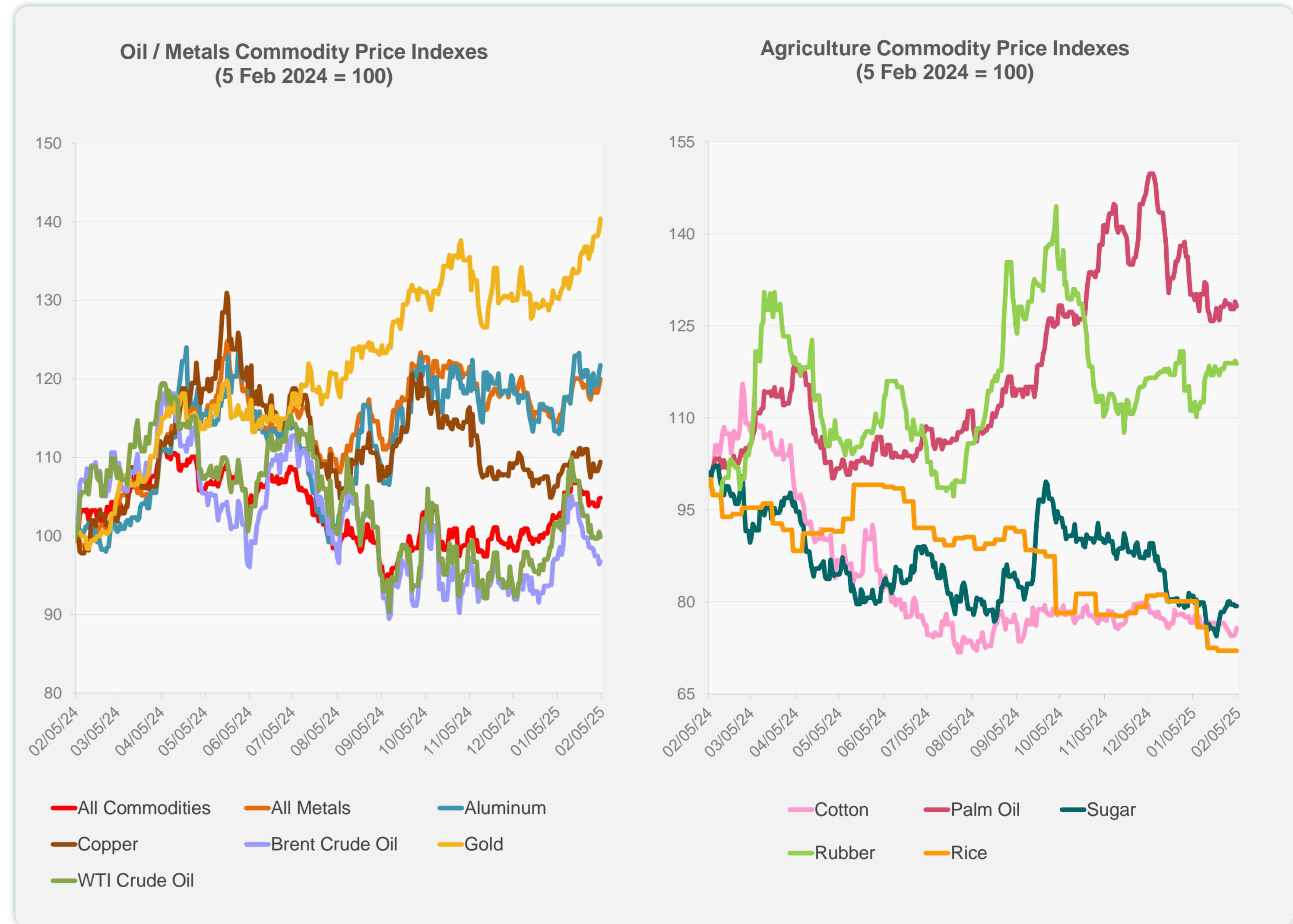
Daily Market Watch
COMMODITY PRICES

5 February 2025, 9:00 AM Manila

	Unit	Latest Closing	% change from Previous Day	% change from 01-Jan-25
S&P All Commodities	US\$	567.57	0.11	3.26
S&P All Metals	US\$	320.43	0.63	4.25
Aluminum	US\$/metric ton	2,647.70	0.70	4.79
Copper	US\$/metric ton	9,024.70	0.51	4.30
Cotton	US cents/lb	64.44	1.42	-2.22
Brent Crude Oil	US\$/barrel	76.43	0.36	3.13
WTI Crude Oil	US\$/barrel	72.70	-0.63	1.37
Gold	US\$/troy oz	2,842.71	0.98	8.31
Palm Oil	US\$/metric tonne	1,034.77	-0.61	-5.94
Rice ¹	US\$/metric ton	483.00	0.00	-10.06
Rubber ²	US\$/kg	245.90	-0.36	3.84
Sugar	US cents/lb	18.20	0.00	0.00

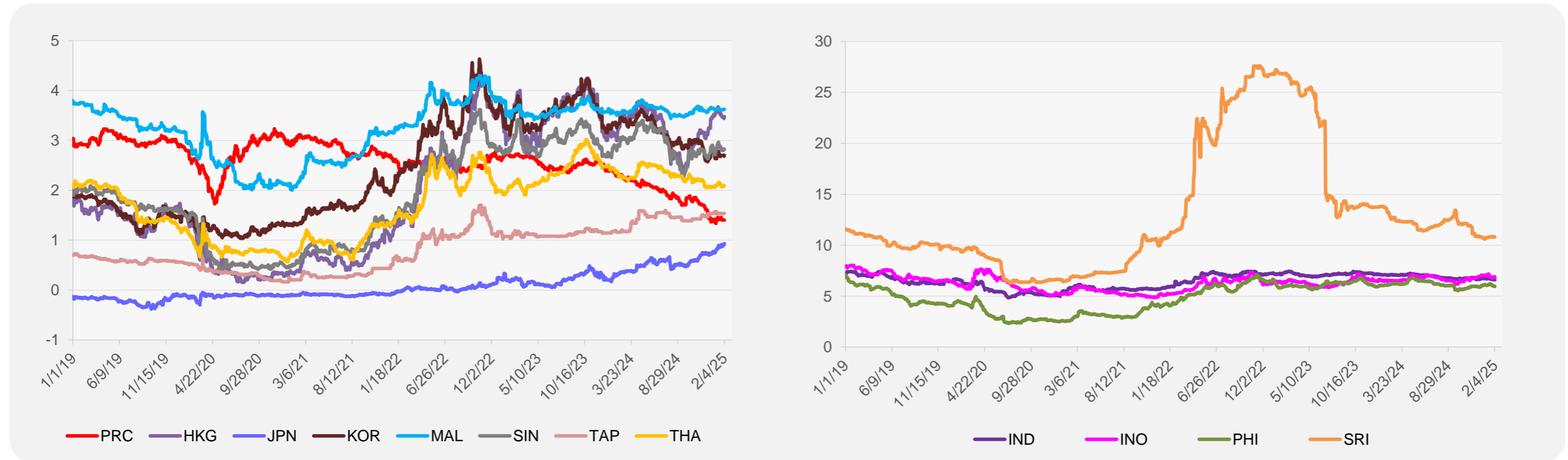
¹ Latest closing price from 22 January 2025.

² Singapore Exchange, Ribbed Smoked Sheet Rubber.

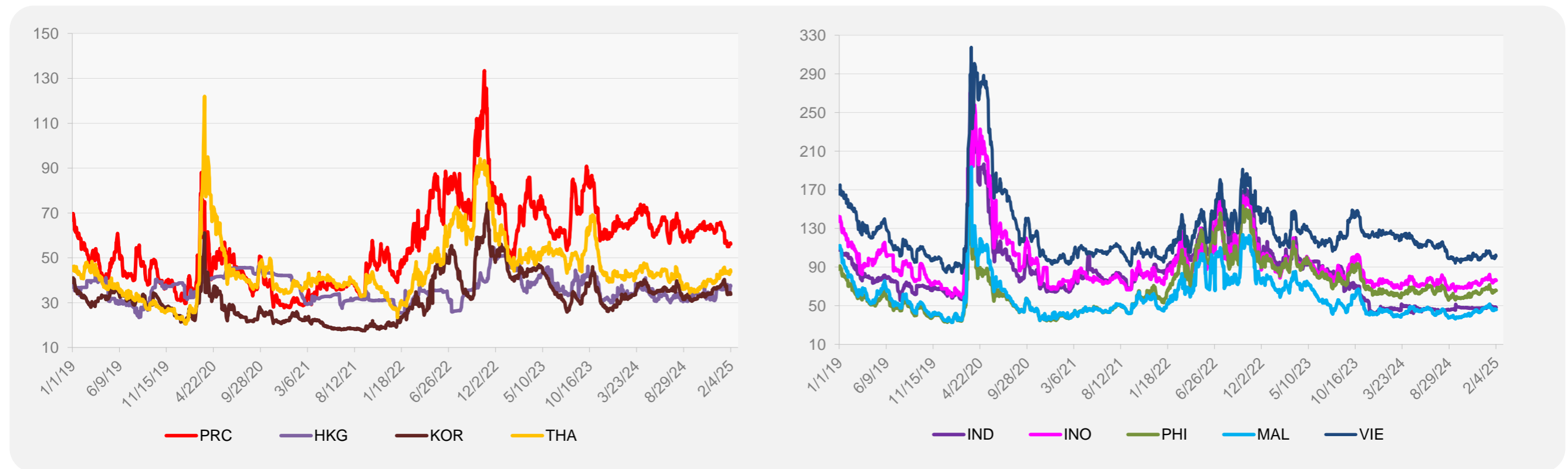


Source: ADB calculations using data from Bloomberg.

5-YEAR LOCAL CURRENCY GOVERNMENT BOND YIELDS (%)



5-YEAR CREDIT DEFAULT SWAP¹



¹ In USD and based on sovereign bonds.
Source: ADB calculations using data from Bloomberg.